

	FIRE EXIT
	FIRE EXTINGUISHER
	ELECTRICAL DISTRIBUTION BOX
	HOSE REEL

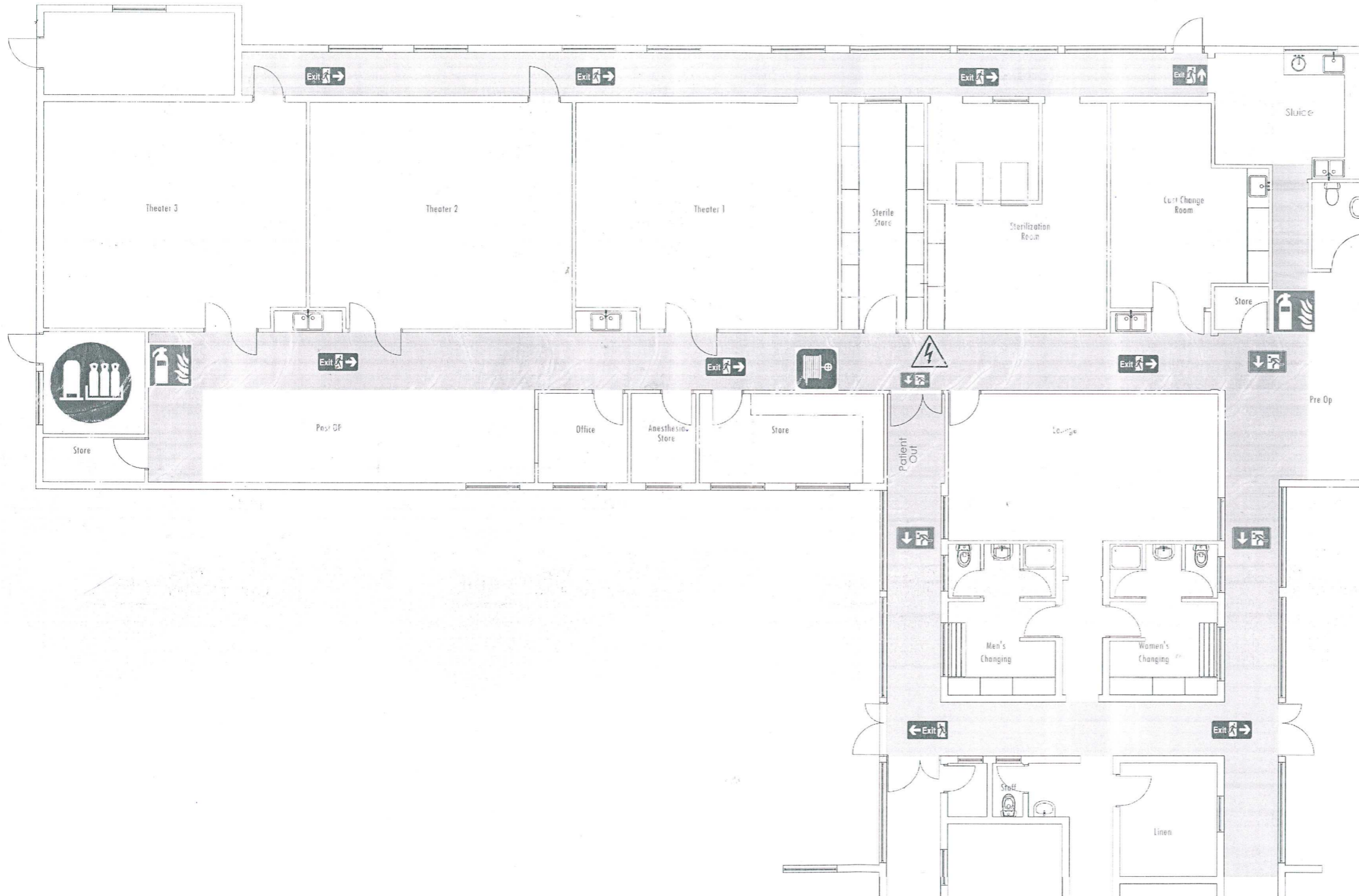
FIRE ACTION


Any person discovering a fire


1. Sound the alarm
2. Leave the building by the designated route
3. Report to assembly point.


Do not return to the building for any reason until authorised to do so


Do not use the lifts.





 FIRE EXIT

 FIRE EXTINGUISHER.

 ELECTRICAL DISTRIBUTION BOX


 MEDICAL GASSES

 HOSE REEL

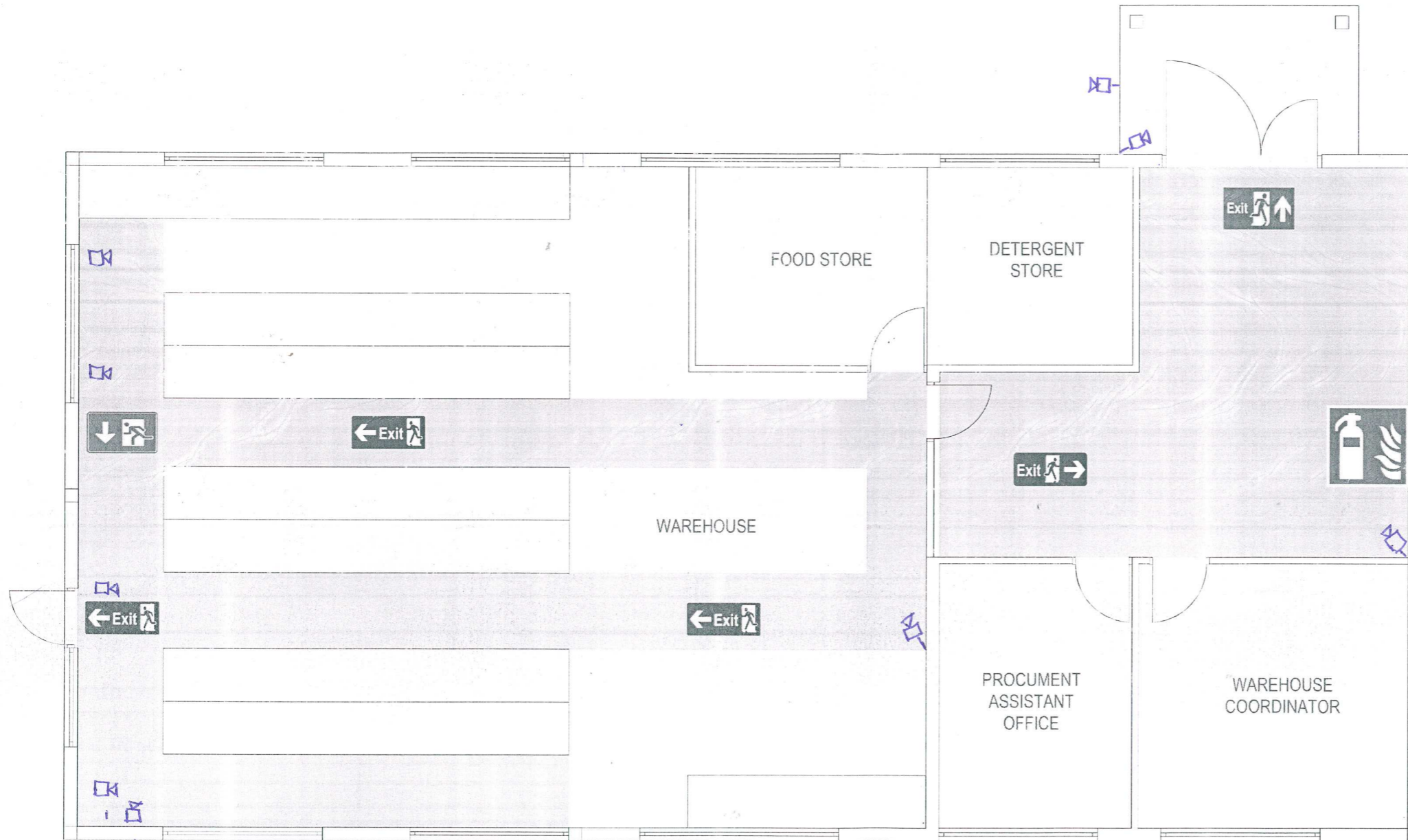
 **FIRE ACTION**


Any person discovering a fire


1. Sound the alarm
2. Leave the building by the designated route
3. Report to assembly point.


 Do not return to the building for any reason until authorised to do so

Do not use the lifts.




 FIRE EXIT

 FIRE EXTINGUISHER.

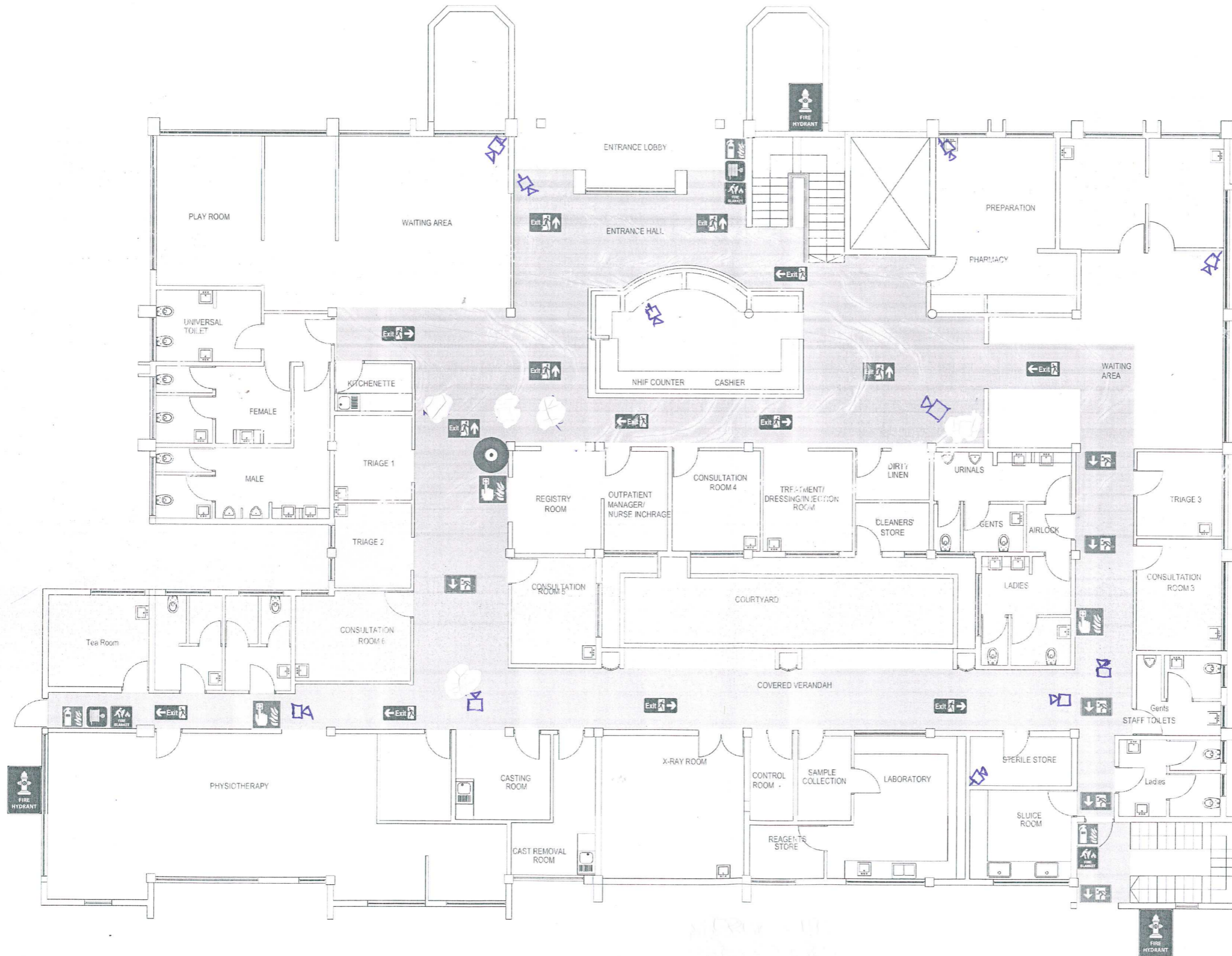
 **FIRE ACTION**


Any person discovering a fire


1. Sound the alarm
2. Leave the building by the designated route
3. Report to assembly point.


 Do not return to the building for any reason until authorised to do so


Do not use the lifts.





Exit  FIRE EXIT


 FIRE EXTINGUISHER

 FIRE BALL

 FIRE BELL

 FIRE BLANKET

 FIRE HYDRANT

 HOSE REEL

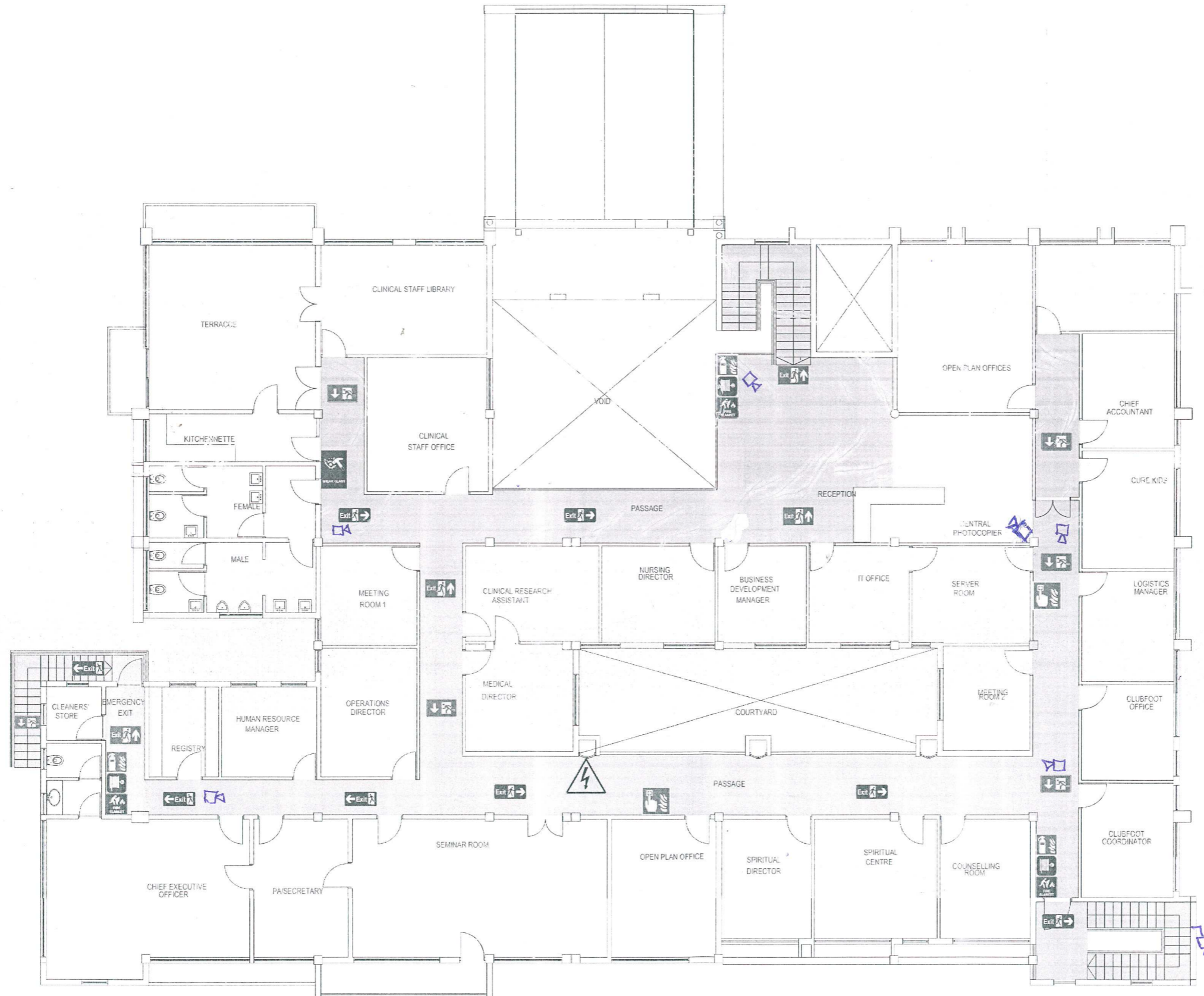
FIRE ACTION

Any person discovering a fire

1. Sound the alarm
2. Leave the building by the designated route
3. Report to assembly point.

Do not return to the building for any reason until authorised to do so

Do not use the lifts.



Exit → FIRE EXIT

FIRE EXTINGUISHER

ELECTRICAL DISTRIBUTION BOX

FIRE BELL

FIRE BLANKET

BELL BREAK GLASS

HOSE REEL

! FIRE ACTION

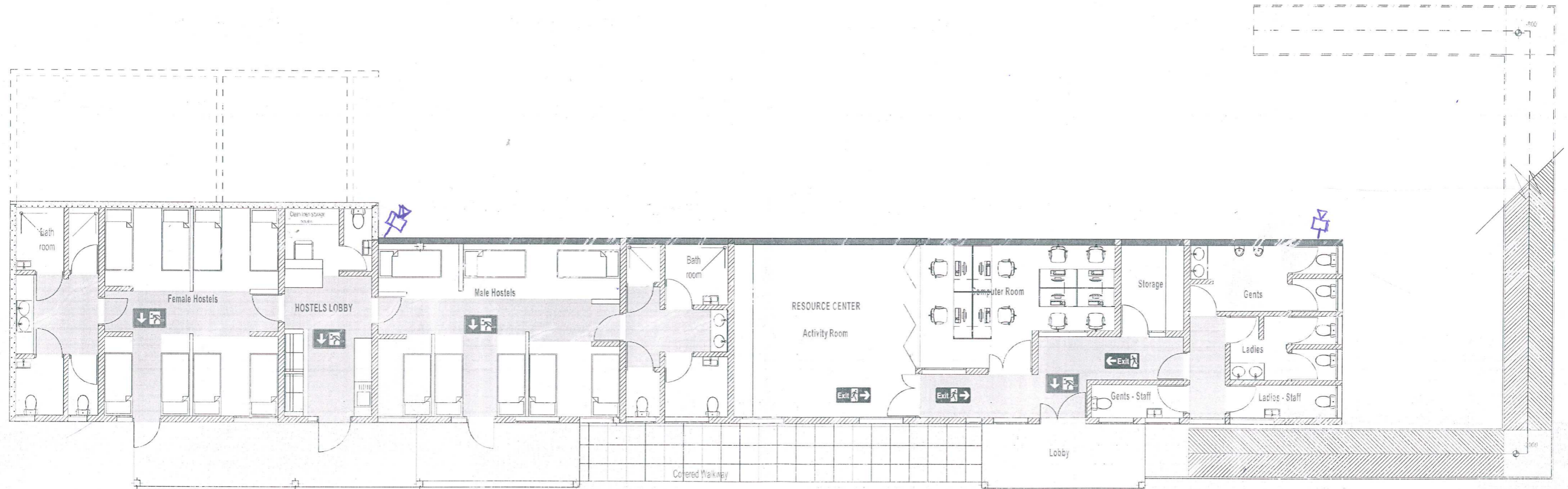
Any person discovering a fire

1. Sound the alarm
2. Leave the building by the designated route
3. Report to assembly point.


⊘ Do not return to the building for any reason until authorised to do so


Do not use the lifts.


Handwritten note: (DTZ) 111






 FIRE EXIT


 FIRE EXTINGUISHER.

 ELECTRICAL DISTRIBUTION BOX

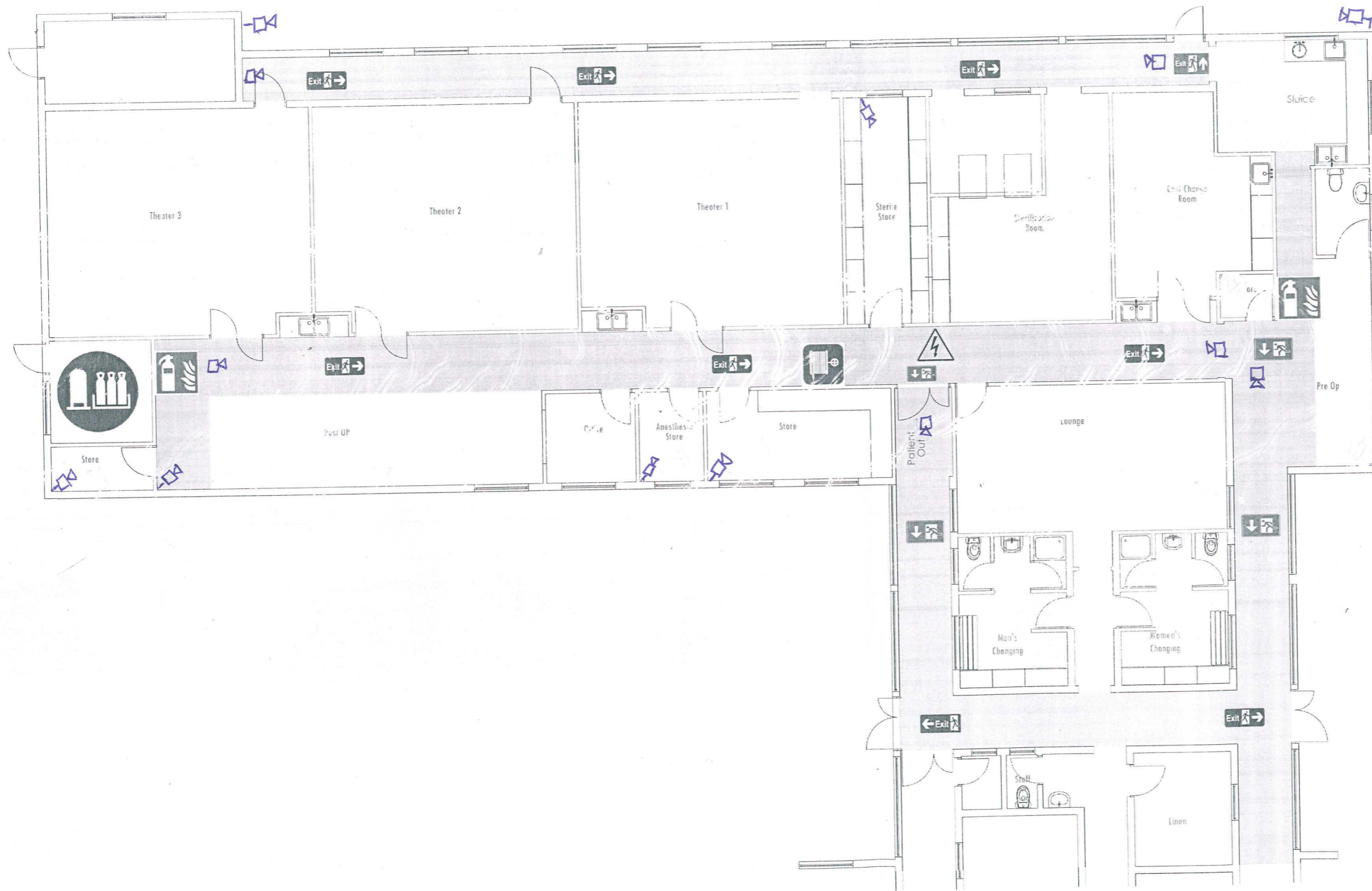
 **FIRE ACTION**

Any person discovering a fire

1. Sound the alarm
2. Leave the building by the designated route
3. Report to assembly point.

 Do not return to the building for any reason until authorised to do so

Do not use the lifts.



Exit **FIRE EXIT**

FIRE EXTINGUISHER.

ELECTRICAL DISTRIBUTION BOX

MEDICAL GASSES

HOSE REEL

! FIRE ACTION

Any person discovering a fire

1. Sound the alarm
2. Leave the building by the designated route
3. Report to assembly point.

⊘ Do not return to the building for any reason until authorised to do so

Do not use the lifts.



Exit → FIRE EXIT

FIRE EXTINGUISHER.

ELECTRICAL DISTRIBUTION BOX

HOSE REEL

! FIRE ACTION

Any person discovering a fire

1. Sound the alarm
2. Leave the building by the designated route
3. Report to assembly point

⊘ Do not return to the building for any reason until authorised to do so

Do not use the lifts.

There were no drawing availed for the following areas,

1. Main gate area and the entire external compound.
2. Lower orthopedic workshop
3. Sewing and control room area.
4. Cafeteria area
5. Playground area.

All theatre stores were considered